

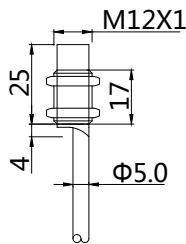
Features:

- M12*1 mm , Brass,nickel-plated housing;
- 4mm , non-flush mountable;
- NAMUR DC 2-wire , switching output;
- Cable



RoHS **CE**

Dimensioned drawing

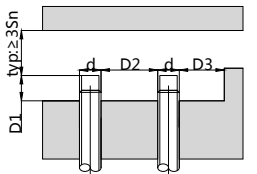


Model No.

Sensing range	Sn: 4 mm
N. 0	SIN-M12-04NA-C10-PV2

Mounting

(non-flush mounting)



Sn	D1	D2	D3
M1204	≥9	≥24	≥12

⚠ Tightening torque of the fastening screws: <10Nm!

Correction Factor	
Nav-ferrous metal	Factor
Fe360	1
Aluminum	0.35~0.45
Brass	0.35~0.5
Copper	0.25~0.45
Stainless steel	0.6~1.0
Cast Iron	0.93~1.05
Nickel	0.65~0.75

Technical data

Electrical data	Operating voltage	6-12V DC
	Switching frequency	1000Hz
	Leakge current	>2.2mA(OFF), <1.1mA(ON)
	Hysteresis	<15%(Sr)
	Repeatability	<2.0%(Sr)
	Power-up delay	≤10ms
	Temperature drift	<10%(Sr)
Environment	Ambient temperature	-25...70°C
	Ingress protection	IP67
Mechanical data	Housing material	Brass,nickel-plated
	Face material	PBT
Electrical connection	Connectors	PVC cable/2m ; 2*0.5mm ²

Wiring

