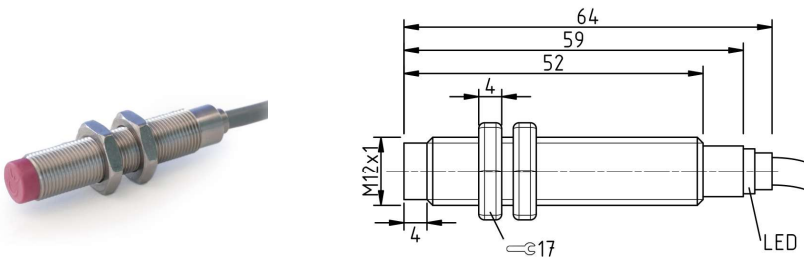


# HIGH TEMPERATURE INDUCTIVE PROXIMITY SENSORS

## Sensing Distance: 4mm - Housing Diameter: M12



Dimensions are in mm.

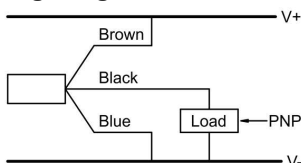
Part Numbers:	
PNP/NO	IN4-12HTPS/L-130
PNP/NC	IN4-12HTPO/L-130
NPN/NO	IN4-12HTNS/L-130
NPN/NC	IN4-12HTNO/L-130

Technical Data:	with LED
Mounting:	Unshielded
Sensing range in mm:	4
Supply voltage:	10-35 VDC
Output function:	N.O. or N.C.
Load current:	120 mA
Switching Frequency:	500 Hz
Short circuit limit:	400 mA
Cable:	PTFE
Operating temperature:	-13 to 266 °F (-25 to 130 °C)
Target size:	12 x 12 x 1 mm ST37
Hysteresis:	3 to 15 %
LED:	Yes
Options:	Cable length, Cable type

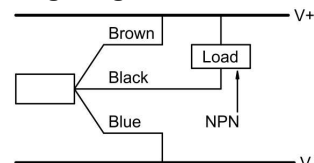
### These sensors share the following specifications:

- |  |  |
|--|--|
| <ul style="list-style-type: none"> <li>* The EMC (Electromagnetic Compatibility) resistance of the switches:<br/>IEC 61000-4-2 Level 2      IEC 61000-4-4 Level 2<br/>IEC 61000-4-3 Level 2      IEC 60255-5 1 kV</li> <li>* Sensing range can vary +/-10 %.</li> <li>* Voltage spikes (300 V for 1 ms, 10 Hz)</li> <li>* All standard cables are 3 x 0.25 mm<sup>2</sup> and a length of 2 m +/-5 %.</li> <li>* Output capacity is 100 nF.</li> <li>* Storage temperature -13 °F to + 176 °F (-25 °C to 80 °C).</li> <li>* Relative humidity is 100 %.</li> </ul> | <ul style="list-style-type: none"> <li>* Vibration resistant to 1 mm amplitude at 55 Hz.</li> <li>* Shock resistant to 10 g for a period of 11 ms.</li> <li>* Degree of protection (DIN 40 050) is IP67 (higher IP options may be available).</li> <li>* Reverse polarity protection is incorporated on the supply voltage.</li> <li>* Load resistor of 100 kOhm is incorporated.</li> <li>* Leakage current is 4 mA at 24 V supply voltage.</li> <li>* Residual ripple is 15 %.</li> <li>* Voltage drop is approximately 2 V when sensor is on.</li> <li>* Sensing face material is: LPC-Vectra.</li> </ul> |
|--|--|

#### Wiring Diagram PNP NO/NC



#### Wiring Diagram NPN NO/NC



**Special types and  
silicone free  
versions are  
available  
upon request**

Design and technical details subject to change